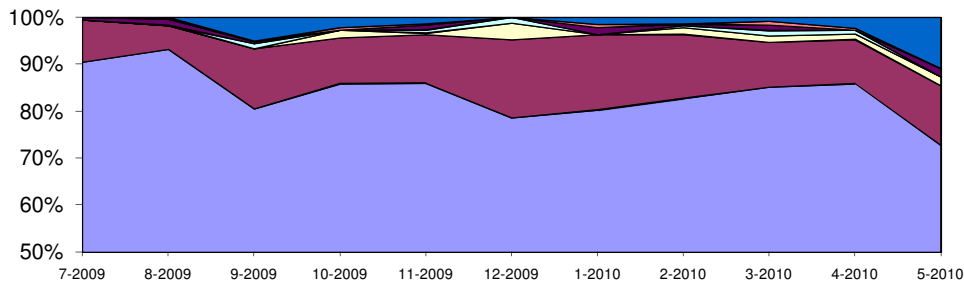


OTIF Delivery Performance to all Customers (Aerospace Springs)



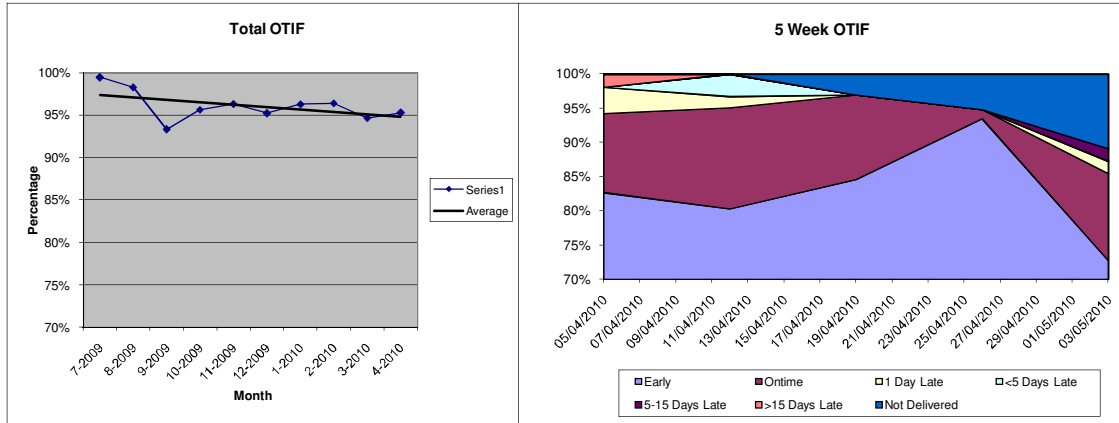
■ Early ■ On-Time □ 1 Day Late □ Upto 5 Days Late ■ 5-15 Days Late ■ >15 Days Late ■ Not Delivered

Date	W Num	Due	Received	Not Delivered	A	B	C	D	E	F	OTIF
03/05/2010	19	55	49	6	40	7	1	0	1	0	85.45%
26/04/2010	18	77	73	4	72	1	0	0	0	0	94.81%
19/04/2010	17	65	63	2	55	8	0	0	0	0	96.92%
12/04/2010	16	61	61	0	49	9	1	2	0	0	95.08%
05/04/2010	15	52	52	0	43	6	2	0	0	1	94.23%
29/03/2010	14	80	77	3	65	9	1	1	0	1	92.50%
22/03/2010	13	68	68	0	58	8	2	0	0	0	97.06%
15/03/2010	12	54	54	0	43	11	0	0	0	0	100.00%
08/03/2010	11	73	73	0	63	2	2	3	3	0	89.04%
01/03/2010	10	81	81	0	74	4	0	0	1	2	96.30%
22/02/2010	9	72	72	0	68	4	0	0	0	0	100.00%
15/02/2010	8	83	83	0	54	28	1	0	0	0	98.80%
08/02/2010	7	38	36	2	32	2	0	1	1	0	89.47%
01/02/2010	6	85	83	2	76	4	3	0	0	0	94.12%
25/01/2010	5	72	69	3	60	8	0	0	1	0	94.44%
18/01/2010	4	62	61	1	50	11	0	0	0	0	98.39%
11/01/2010	3	73	73	0	62	9	0	0	2	0	97.26%
04/01/2010	2	62	62	0	44	15	0	0	1	2	95.16%
28/12/2009	1	0	0	0	0	0	0	0	0	0	
21/12/2009	52	18	18	0	16	2	0	0	0	0	100.00%
14/12/2009	51	20	20	0	15	2	3	0	0	0	85.00%
07/12/2009	50	46	46	0	35	10	0	1	0	0	97.83%
30/11/2009	49	75	72	3	64	4	1	0	2	1	90.67%
23/11/2009	48	55	55	0	49	5	0	0	1	0	98.18%
16/11/2009	47	44	44	0	37	7	0	0	0	0	100.00%
09/11/2009	46	60	60	0	46	12	0	2	0	0	96.67%
02/11/2009	45	66	65	1	62	3	0	0	0	0	98.48%
26/10/2009	44	49	49	0	40	6	2	0	0	1	93.88%
19/10/2009	43	37	37	0	33	4	0	0	0	0	100.00%
12/10/2009	42	19	19	0	19	0	0	0	0	0	100.00%
05/10/2009	41	79	75	4	66	8	1	0	0	0	93.67%
28/09/2009	40	43	43	0	35	6	0	1	1	0	95.35%
21/09/2009	39	41	39	2	34	5	0	0	0	0	95.12%
14/09/2009	38	59	59	0	53	5	0	1	0	0	98.31%
07/09/2009	37	52	44	8	35	9	0	0	0	0	84.62%
31/08/2009	36	94	94	0	88	5	0	0	1	0	98.94%
24/08/2009	35	37	37	0	32	3	0	0	2	0	94.59%
17/08/2009	34	48	48	0	44	3	0	0	1	0	97.92%
10/08/2009	33	45	45	0	43	1	0	0	0	1	97.78%
03/08/2009	32	69	69	0	66	3	0	0	0	0	100.00%
27/07/2009	31	48	48	0	44	4	0	0	0	0	100.00%
20/07/2009	30	38	38	0	33	4	0	0	1	0	97.37%
13/07/2009	29	34	34	0	33	1	0	0	0	0	100.00%



Managing Director: S M Boyd Registered Company 121 4570 VAT Number 112 8342 02

Tel: +44 (0) 1527 523764 Fax: +44 (0) 1527 527920 Email: Info@g-o-springs.com Web: www.g-o-springs.com

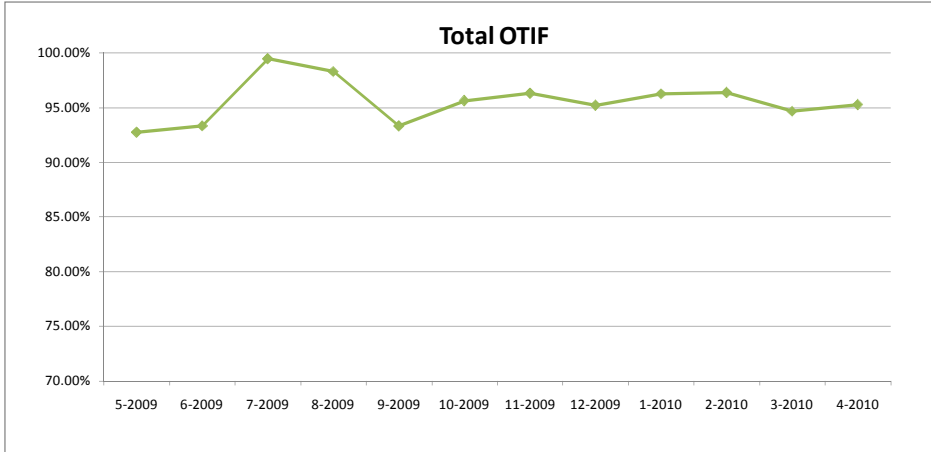


Month	Year	Con	Due	Received	Not Delivered	Early	On-Time	1 Day Late	Upto 5 Days Late	5-15 Days Late	>15 Days Late	OTIF
5	2009	5-2009	166	166	0	116	38	5	3	4	0	92.77%
6	2009	6-2009	270	269	1	216	36	7	2	8	0	93.33%
7	2009	7-2009	189	189	0	171	17	0	0	1	0	99.47%
8	2009	8-2009	293	293	0	273	15	0	0	4	1	98.29%
9	2009	9-2009	195	185	10	157	25	0	2	1	0	93.33%
10	2009	10-2009	184	180	4	158	18	3	0	0	1	95.65%
11	2009	11-2009	300	296	4	258	31	1	2	3	1	96.33%
12	2009	12-2009	84	84	0	66	14	3	1	0	0	95.24%
1	2010	1-2010	269	265	4	216	43	0	0	4	2	96.28%
2	2010	2-2010	278	274	4	230	38	4	1	1	0	96.40%
3	2010	3-2010	356	353	3	303	34	5	4	4	3	94.66%
4	2010	4-2010	255	249	6	219	24	3	2	0	1	95.29%
5	2010	5-2010	55	49	6	40	7	1	0	1	0	85.45%



Managing Director: S M Boyd Registered Company 121 4570 VAT Number 112 8342 02

Tel: +44 (0) 1527 523764 Fax: +44 (0) 1527 527920 Email: Info@g-o-springs.com Web: www.g-o-springs.com



Month	Total OTIF
5-2009	92.77%
6-2009	93.33%
7-2009	99.47%
8-2009	98.29%
9-2009	93.33%
10-2009	95.65%
11-2009	96.33%
12-2009	95.24%
1-2010	96.28%
2-2010	96.40%
3-2010	94.66%
4-2010	95.29%
Average	95.59%
Target	95.00%



Managing Director: S M Boyd Registered Company 121 4570 VAT Number 112 8342 02

Tel: **+44 (0) 1527 523764** Fax: **+44 (0) 1527 527920** Email: **Info@g-o-springs.com** Web: **www.g-o-springs.com**